

ERD

- description : ERD
- author :
- email : jhgong@repia.com
- lastupdate : 2020-09-18, 2022-08-11

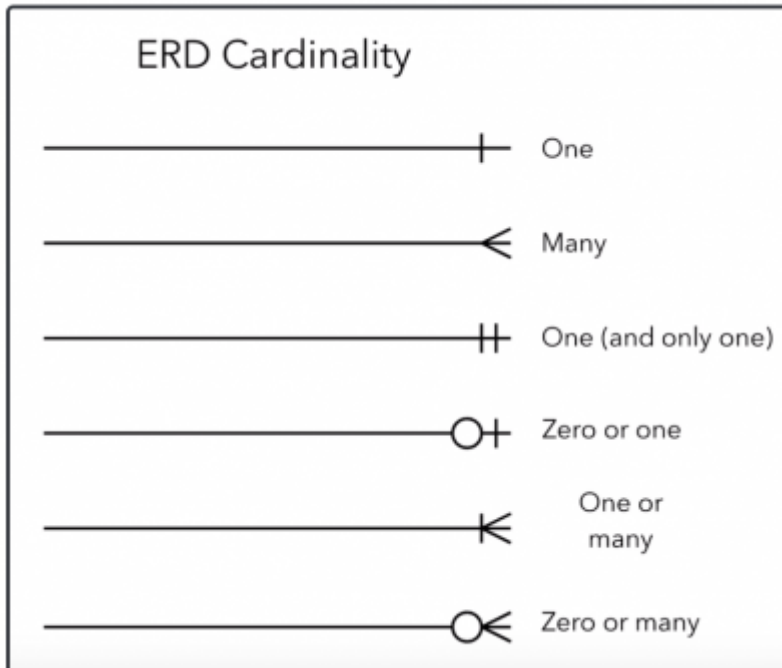
Intro

Case Study

Term

ERD (Entity Relationship Diagram) :
 'Entity ' 'Relationship '

(cardinality) :
 [•] () ,



Cardinalities represent the relationships between databases, or entities. Each line connection contains different symbols to reflect the type of relationship between the entities.

: [Entity Relationship Diagrams](#)

Tools

- [ERDCloud](#)
- [Erwin](#)

Tip

Troubleshooting

Ref

[\[DB\]](#) [ERD](#) [\(1:N \)](#)

[Entity-Relationship Diagram Symbols and Notation](#)

, , [ERD](#)

From:

<https://125.132.25.164/dokuwiki/> -
 - 2023.12

Permanent link:

<https://125.132.25.164/dokuwiki/doku.php?id=wiki:database:erd>

Last update: **2023/01/13 18:44**

